

The Claflin Hill Symphony Orchestra 2023-24 Season Program



Our Twenty-Fourth Season!

Symphony concerts at Milford Town Hall in Milford

The Homefield Credit Union Jazz Series at Caffé Sorrento

The Claflin Hill Apple Tree Arts Chamber Music Series in Grafton



The Claflin Hill Symphony Orchestra

Passionate performances. Masterful musicians.



Credit Union



Mortgage Lender



Wealth Management



Place to Work

VOTED
BEST CREDIT UNION!
 2021 * 2022 * 2023
 MyFM Quest for the Best



*Homefield
 Credit Union...
 Banking
 With A
 Homefield
 Advantage!*



138 S. Main Street
 Milford, MA

86 Worcester Street
 North Grafton, MA

508-839-5493
 homefieldcu.com

Proud Business Partner of ...



**The Claflin Hill
 Symphony Orchestra**

Passionate performances. Masterful musicians.



NMLS ID #797006

A Claflin Hill Business Partner

For the finest in symphony music,
anywhere, it's the
CLAFLIN HILL SYMPHONY



Small, family owned, and still here!
MEDWAY OIL & PROPANE
Proud to partner-up with the Best!



Honored supporter of the Claflin Hill Symphony

508-533-6561

www.medwayoilpropane.com

A Claflin Hill Business Partner



CLASSIC HITS, LOCAL SPORTS, LOCAL NEWS AND HAPPENINGS
RED SOX, PATRIOTS, BRUINS, CELTICS, MILFORD LEGION BASEBALL
WWW.MYFMTODAY.COM - @MYFM1013 ON SOCIAL - MYFM LIVE APP

Claflin Hill Media Sponsor

Donate to Claflin Hill!
Just click here.

Do you like to sing? Join the chorus!



Greater Milford Community Chorus

A Community Use Program

More information at www.greatermilfordcommunitychorus.org

**The remedy for FOMO? (aka Fear of missing) out
Order your tickets RIGHT NOW!**



Holiday Pop 2023

Saturday, December 9, 2023

Goulash Delight

Saturday, February 3, 2024



Latin Salsa Buffet

Saturday, March 9, 2024

Concert Opera Heritage

Saturday, April 27, 2024



**Clafin Hill Apple Tree Arts
Chamber Music Series in Grafton**

Homefield
credit union

Banking with a Homefield Advantage.

Homefield Credit
Union Jazz Series
at Sorrento Milford



Note to self:

Call Paul Rao for all my real estate needs. 508-254-5810



BERKSHIRE HATHAWAY
HomeServices
Page Realty

paulrao.com  Serving the area since 1979


Does your communication
hit all the right notes?

Let us craft your message so that
it's in time, in tune, and on the mark!



RAO | Design
Group
Information Design & Delivery

www.RaoDesignGroup.com

Claflin Hill Notes ~ November 4, 2023

The three works on the first half of the program, while composed during different musical eras, are similar in approach in that each germinates from a simple statement of a musical idea.

Johann Sebastian Bach (1685-1750) composed his *Passacaglia and Fugue in C minor*, BWV 582 for organ “con pedale” (with pedal). Most scholars have dated the work to have been composed sometime between 1706 and 1713, early in his career which, at that time, included church positions in Arnstadt (1703-1707), Mulhausen (1707-1708) and Weimar (1708-1717). The form of the first part of the work is a set of continuous theme & variations over an eight-measure ground bass. This is followed without pause by a three-voice fugue, with subjects taken directly from the two halves of the ground bass.

The work has been transcribed many times for orchestra, most notably by Ottorino Respighi, Eugene Ormandy and Leopold Stokowski as well as for concert band, by Donald Hunsberger. The great cellist Pablo Casals (1876-1973) considered Bach, whose entire output was created during music’s Baroque era, to be a Romantic composer. On hearing this work, one can understand why.

The German arch-romantic **Richard Wagner** (1813-1883) had already begun his famous operatic quadrilogy, the *Ring Cycle*, when he completed *Tristan und Isolde* in 1859. The source of the latter stems from a medieval Celtic legend. Alison Eldridge of *Encyclopedia Britannica* has provided a summary:

The young Tristan ventures to Ireland to ask the hand of the princess Isolde for his uncle, King Mark of Cornwall, and, having slain a dragon that is devastating the country, succeeds in his mission. On the homeward journey Tristan and Isolde, by misadventure, drink the love potion prepared by the queen for her daughter and King Mark. Henceforward, the two are bound to each other by an imperishable love that dares all dangers and makes light of hardships but does not destroy their loyalty to the king.

The greater part of the romance is occupied by plot and counterplot....The lovers flee into the forest of Morrois and remain there until one day Mark discovers them asleep with a naked sword between them. Soon afterward they make peace with Mark, and Tristan agrees to restore Isolde to Mark and leave the country. Coming to Brittany, Tristan marries Isolde of the White Hands, daughter of the duke, “for her name and her beauty,” but makes her his wife only in name. Wounded by a poisoned weapon, he sends for the other Isolde, who alone can

heal him. His jealous wife, who has discovered his secret, seeing the ship approach on which Isolde is hastening to her lover's aid, tells him that it carries a black sail. Tristan, turning his face to the wall, dies, and Isolde, arriving too late to save her love, yields up her life in a final embrace. A miracle follows their deaths: two trees grow out of their graves and intertwine their branches so that they cannot be parted by any means.

Wagner's *Prelude to Tristan und Isolde* begins at a deliberate pace in 6/8 time, and immediately stretches the bounds of traditional harmony. The first chord, known as the "Tristan" chord, leads to another dissonant chord and so on, finally resolving at the end of the opera. The Prelude is often considered to be a landmark in the history of Western music. After hearing the first act of the opera in 1887 Claude Debussy, heard on the second half of tonight's program, said that it was "decidedly the finest thing I know."

Joseph-Maurice Ravel (1875-1937) has often been classified with Debussy as a French Impressionist, yet he used ideas from so many styles (including jazz and neo-classicism), that to pigeon-hole his musical output into one particular style would be a great disservice to him. Ravel did not consider himself to be an impressionist. He was born in the Basque town of Ciboure, France, near Biarritz, not far from the Spanish border. From 1889 to 1905 he studied at the Paris Conservatoire, making several ill-fated attempts to win the Prix de Rome composition prize. In the years following, Ravel became famous for a number of works (*Pavane pour une infante défunte*, *Rapsodie espagnole*, *Ma mère l'Oye*) and, not necessarily to his liking, became a sought-after teacher. Ralph Vaughan Williams studied with him in 1907-1908, but later, when George Gershwin asked to study with him, Ravel said that he (Ravel) should be studying with Gershwin!

A late work, *Boléro* (1928) was composed as a commission from the Russian ballerina Ida Lvovna Rubinstein. Ravel said that the work was "one long, very gradual crescendo. There are no contrasts, and there is practically no invention except the plan and the manner of the execution. The themes are altogether impersonal." It initially scored mixed reviews. Esteemed Boston critic Philip Hale wrote that it was "the clever trick of a super-refined composer. The trick is amazingly well-performed, but it is only a trick." Ravel himself grew to loathe the work and commented to fellow composer Artur Honegger, "'I've written only one masterpiece – *Boléro*. Unfortunately there's no music in it." Time has proven otherwise.

The work is scored for a very large orchestra, with many of the winds featured as soloists: piccolo, 2 flutes (one doubling on piccolo), 2 oboes

(one doubling on *oboe d'amore*), *cor anglais*, 2 clarinets (one doubles on E-flat clarinet), bass clarinet, 2 saxophones (sopranino and soprano doubling tenor), 2 bassoons, contrabassoon, 4 horns, 4 trumpets, 3 trombones, bass tuba, 3 timpani, 4 additional percussionists: 2 snare drums, bass drum, pair of cymbals, tam-tam, celesta and harp and strings

The second half of tonight's program features two of the best-known works of French Impressionistic composer **Claude Achille Debussy** (1862-1918). He grew up relatively poor; his father was an unsuccessful merchant and his mother a seamstress. The family's lack of financial means, however, did not prevent his musical talent from surfacing and at the age of ten he was admitted to the Paris Conservatoire, where he stayed for eleven years. While there, he was considered to be a rebel—and indeed he was. In the decades that followed, starting with his piano work *Clair de Lune* (1890), Debussy became the proponent of an altogether different style, Impressionism. Features of this style are (1) the importance of timbre (color) over logical development, (2) an expansion of harmony, often incorporating whole-tone and pentatonic scales, shifting of parallel chords, etc. that sometimes creates tonal ambiguity, and (3) a lightness of approach that often hints at rather than states—tutti brass are used only at climaxes.

The symphonic poem, *Prélude à l'après-midi d'un faune* (*Prelude to the Afternoon of a Faun*) (1892) was inspired by the poem of the same name by Stéphane Mallarmé. The music, as Debussy put it, “evokes successive scenes in which the longings and desire of the Faun pass in the heat of the afternoon.” Premiered on December 23, 1894 by the National Society of Music, Paris, under the conducting of Gustave Doret, the work was considered shocking by some and abhorred by others. One critic even complained “the faun must have had a very bad afternoon.” Today it is considered to be a turning point in the history of musical composition. The work is deftly scored for three flutes, two oboes, *cor anglais*, two clarinets, two bassoons, four horns, two harps, antique cymbals, and strings.

La mer, trois esquisses symphoniques pour orchestre (*The sea, three symphonic sketches for orchestra*), known simply as *La Mer* is an absolute masterpiece. Composed between 1903 and 1905, the piece was premiered at a Lamoureux concert in Paris, October 15, 1905 under the baton of Camille Chevillard. The work is in three movements:

- I. "De l'aube à midi sur la mer" – *très lent – animez peu à peu*
- II. "Jeux de vagues" – *allegro (dans un rythme très souple) – animé*
"Dialogue du vent et de la mer" – *animé et tumultueux – cédez très légèrement*

[English translation:]

I. "From dawn to noon on the sea" or "From dawn to midday on the sea" – *very slow – animate little by little*

II. "Play of the waves" – *allegro (with a very versatile rhythm) – animated*

"Dialogue of the wind and the sea" – *animated and tumultuous, ease up very slightly*

Debussy's subtitle, "three symphonic sketches," indicates that he did not want the work to be known as a symphony, and yet it could be considered a three-movement one, with the second movement a scherzo and the third, with its hauntingly beautiful theme, resembling a sonata form with coda.

Debussy loved the sea. He commented in 1906 at Le Puy near Dieppe, "Here I am again with my old friend the sea, always innumerable and beautiful. It is truly the only thing in nature that puts you in your place." And in 1911 he wrote from the resort town of Houlgate, on the English Channel: "Here life and the sea continue—the first to contradict our native savagery, the second to accomplish its sonorous going and coming, which cradles the melancholy of those who are deceived by the beach."

La Mer is scored for a large orchestra: 2 flutes, piccolo, 2 oboes, *cor anglais*, 2 clarinets, 3 bassoons, contrabassoon, 4 French horns, 3 trumpets, 2 cornets, 3 trombones, tuba, timpani, bass drum, cymbals, triangle, tam tam, glockenspiel, 2 harps and strings.

Jon Ceander Mitchell

Holiday Pops 2023

Saturday, December 9, 2023 at 7:30 p.m.





Claflin Hill Symphony Orchestra Board of Directors 2023-24

Officers:

Stephen Chaplin, President	Hopedale
George Roberts, CPA, Treasurer	Medway
Susan Surapine, Clerk	Milford

Directors:

Peter Cardoza, Director	Grafton
Dick Goguen, Director	Holliston
Debrah Hoppe, Director	Milford
Virginia Larkin, Director Emeritus	Hopedale
Deb Moore, Director	Holliston
Paul Rao, Director	Milford
Patty Samon, Public Relations	Franklin
Andy Starkis, Director	Milford
Bernadette Stockwell, Marketing	Littleton
Wayne Stockwell, IT Logistics	Littleton

BEST WISHES CLAFLIN HILL SYMPHONY!

THE DIAMOND AND
CUSTOM JEWELRY DESIGN EXPERTS
FOR 70 YEARS!



191 Mechanic Street #8, Bellingham, MA 02019 Phone: 508.966.4477

A Claflin Hill Business Partner

Dinner Before Symphony ~ Nightcap After
Be sure to visit

Sorrento Milford

Fine Italian Dining

Brick Oven Pizza, Open for Lunch & Dinner
Banquet Facilities ~ Lounge



508-473-2460
143 Central Street, Milford

A Clafin Hill Business Partner



Proud Supporter of



The Clafin Hill
Symphony Orchestra

Passionate performances. Masterful musicians.



Charles River Bank

Personal Connections. Powerful Solutions.

70 Main Street • Medway • 508.533.8661
1 Hastings Street • Mendon • 508.422.9792
2 South Maple Street • Bellingham • 508.966.2857

CharlesRiverBank.com

Follow
us on



Equal Housing Lender

Member FDIC • Member DIF

A Clafin Hill Business Partner

Clafin Hill presents

The Clafin Hill Apple Tree Arts Chamber Music Series

string quartet “rock” of ages

Featuring The Blackstone Valley String Quartet

Saturday, November 18, 2023 at 7:30 p.m.

- Borodin String Quartet No. 2
- Bohemian Rhapsody
- Mozart Quartet No. 22
- Bad Guy by Billie Eilish as arranged by the Vitamin String Quartet
- Ravel String Quartet in F

The Clafin Hill Chamber Series launches another season by presenting the Blackstone Valley String Quartet – whose members are all from the CHSO – as they present a program featuring string quartets from Mozart to Modern Pop Covers. The string quartet – long considered to be the premier ensemble genre in chamber music – has made a big comeback in popular culture in recent years with many quartets performing covers of current popular music. Along with a couple of BVQ favorite pop covers, the program will feature great string quartet repertoire from Ravel, Borodin and Mozart. A refreshing take on a venerable form!



Great Hall of
Apple Tree Arts
One Grafton Common



www.clafinhill.org

Applause for our sponsors:

This program is supported in part by the Grafton Cultural Council, a local agency, which is supported by the Massachusetts Cultural Council, a state agency.

CSR Financial Services



Banking with a Homefield Advantage.

[Click here to reserve your seats](#)
[Rock of Ages,](#)
[Saturday, November 18th at 7:30 p.m..](#)

Kicking off our 24th Season!

I remember the very first Claflin Hill Symphony concert.

Sunday evening. May 7, 2000.

It was warm. Unseasonably warm.

I had been taking bass clarinet lessons from Paul at the Indian Hill School of Music— just a half mile from my house in Littleton.

Every Wednesday afternoon, I would put together my horn and play while Paul offered his suggestions so that the sounds I made were more like music than noise.

Week after week, I showed up and so did he.

I had started lessons in January of 1999. A year and a half in, Paul mentioned a foundation that he had created— The Claflin Hill Music Performance Foundation, Inc. a nonprofit, that raised money to support summer concerts.

I had been to one of those concerts at Milford Town Park. The Milford Concert Band played while kids paraded around and parents sat in lawn chairs or on blankets enjoying a free night of music.

Then, sometime during the third semester of lessons, Paul talked about an opportunity to launch a symphony orchestra. The Worcester State College Chorus was going to perform Carmina Burana.

‘Cool!’ I thought, having NO idea what that was.

Paul may have hummed the opening notes, and I probably responded, “Oh, I do know that.”

That’s how it’s been these past 24 years. Paul programs pieces and I get to know them. My musical knowledge expands. Often pairing familiar pieces with lesser known works, I have become more versed in symphonic music.

I don’t usually remember the names of the symphonies or operas or even their composers, but having experienced these master works played live by the musicians that I have come to know and love colors my life in ways that are hard to measure but fill me with appreciation and gratitude.

If you’re reading this, you, too, value this talented group of musicians and the nonprofit that makes each concert possible. Please join me in supporting The Claflin Hill Symphony Orchestra.

[Click here to donate NOW! Thanks so much.](#)





Silken Audio

- Professional Location Recording
- Audio Production

Ken Silber

617-686-1585

ken@silkenaudio.com

www.silkenaudio.com

The Claflin Hill Symphony Orchestra
Paul Surapine, Founding Executive & Artistic Director
"The Raymond T. Surapine Memorial Baton"

Presents

"Season 2023-24 – Our Twenty Fourth Year"

"Idyllic Dreamscapes!"

Saturday, November 4, 2023 7:30 PM
Milford Town Hall

PROGRAM

Passacaglia and Fugue in c minor Johann Sebastian Bach
Symphonic transcription by Leopold Stokowski

Prelude to "Tristan und Isolde" Richard Wagner
Concert version arranged by the composer

Bolero Maurice Ravel

INTERMISSION

Prelude a l'apres-midi d'un faun Claude Debussy
(Afternoon of a faun)

Phyllis Aronson, CHSO Principal Flute

La Mer (The Sea) Debussy

- I. De l'aube a midi sur la mer
(From Dawn to noon on the sea)
- II. Jeux de vagues (Play of the waves)
- III. Dialogue du vent et de la mer
(Dialogue of the wind and the sea)

Applause for our sponsors ~



The Claflin Hill Symphony Orchestra

Paul Surapine, Founding Executive & Artistic Director

"The Raymond T. Surapine Memorial Baton"

Violin I: Angel Valchinov*, Concertmaster

Anne Kornfeld*

The Florence Della Chiesa Memorial Chair

Dimitar Krastev

The Bayiates Violin Chair

Yulia Potvin

The Burrill Family Violin Chair

Susan Holcomb

The Edilio "Slim" Pagnini Memorial Violin Chair

Sally Martin

The Rowe-Starkis Violin Chair

Lynne Canavan*

The Sophie Holt Violin Chair

Zachary Surapine

The Surapine Family Violin Chair

Violin II: Margaritka Valchinova*, Principal

Adam Vaubel

The Vincent Motuzas Memorial Violin Chair

Khanh Trinh

The Steven J. Trettel Memorial Violin Chair

Jenae Starikov

The Austin & Linda Staheli Memorial Violin Chair

Diane Plouffe

The Lavallee-Ruggiero Memorial Violin Chair

Gordon Strick

The Clarice Daniels Southwick Memorial Violin Chair

Paula Gedraitis

The Edward & Ruth Horrigan Memorial Violin Chair

Jagan Nath Singh Khalsa*

The Pat & Larry Jeffery Memorial Violin Chair

Viola: Dimitar Petkov*, Principal

The Deborah Levy Memorial Principal Viola Chair

Lilit Muradyan

The Greta Magen Memorial Viola Chair

Irina Naryshkova

The Albert E. Rao Memorial Viola Chair

Steven Sergi

The Jacqueline Blais Rao Memorial Viola Chair

Sylvia DiCrescentis

The Janet Hargraves MacLaren Memorial Viola Chair

Katelyn Lashley

The Mohan Family Viola Chair

Nissim Tseytlin

Jeremy Sippel-Tonelli

Cello: Johann Soultis, Principal

The Jane Holl Memorial Principal Cello Chair

Seth MacLeod

The Ellen "Ginny" Larock Memorial Cello Chair

Eleanor Blake

The Iyawata Barbara Schneider Memorial Cello Chair

Priscilla Chew

The Cathleen Lane Chair

Cameron Sawzin

The Barbara Robinson Memorial Cello Chair

Domenic Narducci

The Daly-Soligon Memorial Cello Chair

Mario Portev

The Davis Family Cello Chair

Bass: Judy Yaldatel*, Principal

The Ashley M. Roberts Bass Chair

Jack Corbett

The Alice Hoppe and Nila Surgi Teacher Chair

Ben Masi

Dan Gorn

Flutes: Phyllis Aronson, Principal

The Stanley W. Aronson Memorial Principal Flute Chair

Lori Halt*

The Wade Barnes Memorial Flute Chair

Amy Carroll, Piccolo

The Mulcahy Family Flute Chair

Emma Kucich

Oboes: Kyoko Hida-Battaglia, Principal

Jared Chapman

The Margaret Kochon Memorial Oboe Chair

Colton Cox, English Horn

The Carole Hirsch Memorial Oboe Chair

Clarinets: Teri Herel*, Principal

The Christopher A. Hoppe Memorial Principal

Clarinet Chair

Warren Barnes*

The Pasquale Cardillo Memorial Chair

Todd Brunel, Bass Clarinet

The Blanchette Family Chair

Joseph Pisano*, Bass Clarinet & Saxophone

The Adelia Maresca Memorial Clarinet/Saxophone Chair

Bassoons: Tracy McGinnis, Principal

The James D. Morey Memorial Principal Bassoon Chair

Donna Taub

Patty Yee*

The Paul E. McWade Memorial Chair

Jeffrey Freeman, Contra Bassoon

Horns: Neil Godwin, Principal

The Zabela-Eddins Family Principal Horn Chair

Susan Winterbottom-Shadday

The Karen Earhart Memorial Horn Chair

Jeremy Ronkin*

Pam Earle

Trumpets: Erich Ledebuhr, Principal

The E. Jacqueline Wild Memorial Principal Trumpet Chair

Jeffrey Hoefler

The George West Memorial Trumpet Chair

Kevin Donegan

The Tessicini-Coelho Memorial Trumpet Chair

Jon Clark

Anna Damigella

Trombones: Neal Melley, Principal

Douglas Weeks*

Christopher Beaudry

The John Evans Memorial Bass Trombone Chair

Tuba: Chip Halt*

The Dr. Herbert Paul Kagen Memorial Tuba Chair

Piano/Keyboard: Stella Owen*

The Carol Szymanski Memorial Keyboard Chair

Harp: Szu-NingTai, Principal

Yvonne Cox

Timpani: Henry Morel*,

The Harmon Family Foundation Memorial Chair

Percussion: Pieter Struyk, Principal

The Claflin Hill Youth Symphonies Chair

Evan Lattimore*

The Anne "Nanci" Goguen Memorial Percussion Chair

Paul Gross

* Denotes Claflin Hill Donor Member

OFFICIAL PIANO PARTNER OF THE
CLAFLIN HILL SYMPHONY ORCHESTRA

FALCETTI PIANOS

NATICK • NASHUA • SPRINGFIELD

 **YAMAHA**
Bösendorfer




SCHIMMEL
ESTONIA®

PREMIUM PRE-OWNED
STEINWAY & SONS

falcettpianos.com

A Claflin Hill Business Partner

DANA-FARBER/BRIGHAM AND WOMEN'S



CANCER CENTER



———— *salutes* ————

THE CLAFLIN HILL SYMPHONY ORCHESTRA

for its commitment to enriching
the community through music and education.

Edwards Memorial Funeral Home

Serving Greater Milford Since 1882

44 Congress Street

Milford, Massachusetts 01757

508-473-0225

Joseph F. Edwards Jr.

MA License #5725—Type 3 Funeral Director & Embalmer

www.edwardsmemorialfuneralhome.com

edwardsmemroailfuneralhome@verizon.net

A Clafin Hill Business Partner

AREA GLASS Co.

Auto • Home • Commercial

(508) 478-0209

101 Central Street, Milford, MA 01757

AreaGlassCo.com



AHRONIAN
LANDSCAPING
AND DESIGN, INC.

Mark Ahronian

President / Designer
Mass. Certified Horticulturalist

508.429.3844

mark@ahronian.com

www.ahronian.com

Milford
6 Congress St
508-473-0556

Holliston
760 Washington St
508-429-2100



Bright | Jensen
Agency | Sheehan

INSURANCE

Congratulations on your 24 Season



The Claflin Hill
Symphony Orchestra

Passionate performances. Masterful musicians.



A Claflin Hill Business Partner



*Congratulates
The Claflin Hill Symphony Orchestra
for electrifying audiences with great
performances for 24 years!*



Frank's Appliance Service

www.franksappliance.com

331 Main Street, Milford, MA 01757

Phone: (508) 473-1309 ~ Sales Phone: (508) 634-8854

frankw@franksappliance.com

A Tradition of Personal Service and Community Support



Since 1950

PHIPPS INSURANCE AGENCY

80 Main Street—Hopkinton MA 01748

HOME~CONDO~RENTER~AUTO~BUSINESS

508-435-6388 www.phippsinsurance.com

A Claflin Hill Business Partner



American Optometric Association

**Dr. Ronald R. Ferrucci
Dr. Gregory T. Ferrucci
Dr. Evan E. Tong**

GREATER MILFORD EYE ASSOCIATES, P.C.

Glasses and Contact Lens Fittings

- Family eye care
- Diabetic exams
- Cataract screenings
- Glaucoma screenings

192 West Street
Milford, MA 01757

Phone: 508.473.0395
FAX: 508.478.3392

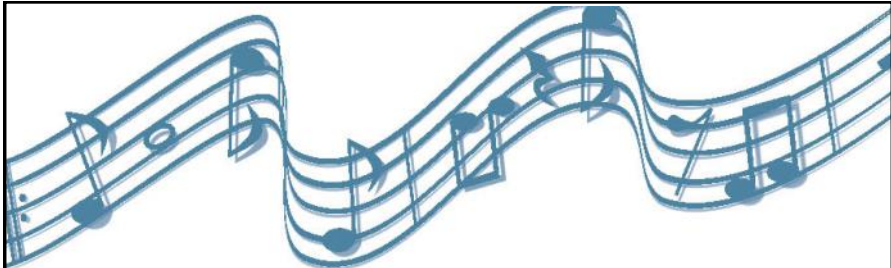


**TIRES ~ BRAKES
MUFFLERS ~ ALIGNMENT
STATE INSPECTION
AUTO SALES**

RAY GEARA

**232 West Street, Milford, MA 01757
PHONE: 508.422.9711 | 508.473.9111
FAX: 508.381.6182
EMAIL: raysautomotive232@outlook.com**

A Claflin Hill Business Partner



Est. 1887

**MILFORD
FEDERAL**

Our Community. Your Bank.



**MILFORD FEDERAL IS PROUD
TO SUPPORT THE
CLAFLIN HILL SYMPHONY
ORCHESTRA**



"MUSIC IS THE
UNIVERSAL LANGUAGE
OF MANKIND."

~HENRY WADSWORTH LONGFELLOW



MilfordFederal.com



A Claflin Hill Business Partner



Bank where *you* matter.

We know that your priorities, goals, and circumstances are unique. It's our mission to help you work toward a financially secure future by providing the right banking products and financial guidance that fit you.



centralfcu.com | (800) 527-1017

**Our new Milford Branch located at
82 Prospect Street is now open!**

Federally insured by NCUA.

Team Rao



Family Owned & People First Since 1963

Contact Info

Al Rao: 508-954-8267

Ellen Rao: 508-954-8264



**BERKSHIRE
HATHAWAY**
HomeServices

Page
Realty

Independently Owned and Operated

TeamRao.com • Over 100 years of cumulative experience



**Guerriere &
Halnon, Inc.**
ENGINEERING & LAND SURVEYING

CIVIL ENGINEERING:

Subdivision Design
Drainage Studies
"21 E" Site Assessment
Septic System Design
Wetland Mapping
Title 5 Inspections
Site Planning

LAND SURVEYING:

Construction Layout
ALTA/ACSM Surveys
Boundary Surveys
Topographic Surveys
Condominium Conversion
Land Court Surveys
Flood Elevation Certificates

www.gandhengineering.com

333 West St.
Milford, MA 01757
(508) 473-6630

55 West Central St.
Franklin, MA 02038
(508) 528-3211

Professional Service Since 1972

Clafin Hill Cultural and Educational Partnerships:

Apple Tree Arts on Grafton's Town Common

CHSO's "most favored community music school"

Greater Milford Community Chorus

CHSO's partner in chorus performance

The Claflin Hill Symphony Orchestra Da Vinci Society

Legacy and Planned Giving

So, you've been supporting CHSO for the past 15 or 20 years, through your annual major gifts, but your body has suddenly dropped below room temperature and you're not going to be able to send in that next Chair Endowment gift.

What happens then – your name drops off the list of donors, and all record of your major investment in the cultural gem you've come to love will be forgotten as the sands of time erase all evidence of your participation.

Over the course of years, some of our Chair Endowment Donors have already invested tens of thousands of dollars through their annual giving.

That is a major and significant investment in the startup of a movement and idea that they believed could take root and growth in our community.

A major and significant investment that we all would hope will be remembered, celebrated and appreciated as future generations come up to enjoy and participate in the cultural edifice that we built together.

One way of insuring that both the organization that we gave birth to, that we built and our significant role in its creation is to explore the avenue of Legacy Planned Giving.

A Legacy Gift can be included as part of your Living Will, and can be designated to support whichever specific aspect of Claflin Hill that you wish to endow – a permanent Chair Endowment in Perpetuity of at least \$25,000 names that Chair forever, with the interest gained on that gift funding the chair each year at the Chair Donor Level.

Larger Gifts can fund in perpetuity Principal Chairs in the Orchestra, The Podium, and even support concert series, concert events, Youth Orchestra scholarships and more.

A Legacy Donor can create their own Legacy – that will be remembered, and enjoyed by our descendants for generations to come.

All Major Legacy gifts will be placed in a permanent restricted Endowment Fund, with only the interest accrued annually begin used to fund the orchestra's growth.

Ask your Financial Planner how you can institute Claflin Hill Legacy Giving as a part of your future bequests. If you don't have a Financial Planner, we have several friends of Claflin Hill, (who are themselves Chair Donors), who can assist you through the process.

For more information, please visit www.claflinhill.org and choose 'DaVinci Society' under *Donate & Support* or call 508.478.5924. Thank you!



Claflin Hill is grateful to our DaVinci Society Members

John Blazys & Victoria Griffin

Dr. & Mrs. Charles Shelley

Mr. & Mrs. Thomas Wesley

Mary Easter & Michael Sammarco

The Catherine L. Coyne Charitable Foundation—

Brian Murray, Trustee

Claflin Hill Private Membership Benefits

*Do you work for a company that matches gifts?
It's a great way to make your donation go even
further. Plus, you benefit from the combined level.*

Each level of support and privileges extends for one year. Membership is renewable annually. Choice of Orchestra Chair sponsorship is subject to availability.

Your name will be recognized in our program book.

Basic Membership (\$35)

All levels of membership entitle the donor to a 10% discount on ticket purchases. Call the office to obtain your special discount code to use when ordering tickets online. Subscription to "Sharing Notes," The Claflin Hill Symphony Orchestra's Electronic Newsletter including Calendar of Events, Special Notices, and interesting articles.

"People of Note" (\$36 - \$199)

\$100 receive a free CD of a Claflin Hill concert.

Maestro's Circle (\$200-364)

The above plus invitations to all Claflin Hill receptions and Special Events. The only "ticket" to these special events.

Leadership Aficionado (\$365- 499— start at just a dollar a day!)

Become a Micro-Philanthropist and set up weekly donations through your bank's online 'pay bills' service. You'll never have to think about your donation again. Choose the amount and the frequency.

Details on the web site— www.claflinhill.org

Symphonist (\$500-999)

All of the above plus invitations to dress rehearsals and to meet with the conductor, composer, and/or soloist. 2 tickets to a symphony concert or your choice.

Soloist (\$1,000-2,499)

All of the above plus the honor of your name, or the name of a loved one, on an orchestra chair plus 2 season tickets.

Virtuoso (\$2,500-4,999)

All of the above plus your name or a loved one's name on a Principal Orchestra chair AND 2 more season tickets (4 total) so you don't miss a note!

Impresario (\$5,000-9,999)

All of the above, plus your name, or a loved one's name, on the Concertmaster chair or the Conductor's podium, and listing as an 'ensemble concert' or 'Children's concert' sponsor.

Luminary (\$10,000 and above)

All of the above plus your name as a 'Symphony Concert Sponsor,' and special acknowledgement in all flyers and advertising, along with the opportunity to arrange a chamber concert at your private function

Special Endowment Gift

Please consider the gift of a Special Endowment, which would allow the Claflin Hill Symphony Orchestra to continue its monumental growth and secure a healthy future for Live Music to thrive and flourish in our community for generations.

The Claflin Hill Symphony Orchestra Private Donors

Claflin Hill gratefully acknowledges the following Annual Fund donations and gifts, pledged between May 1, 2023 and April 30, 2024

If you would like to become a member of our "Donor Family," kindly contact Claflin Hill at 508-478-5924 or e-mail us at psurapine@claflinhill.org

Luminary Level

Debrah & Michael Hoppe & Family

Impresario Level

Jacqueline & Warren Barnes ~ Geri & Steve Eddins

Virtuoso Level

Anonymous ~ Tim Holl ~ The Honorable Francis & Virginia Larkin
Shanti Montgomery ~ Norman Schneider ~ Sue Ellen & Robert Szymanski
Rebecca Wild-Wesley & Thomas Wesley ~ Judy Yaldatel & Ken Rogers

Soloist Level

Joanne & Edward Bayiates
Mr. & Mrs. Joseph Blanchette
& Family
Justine Brewer
Mr. & Mrs. Greg Burrill
Stephen Chaplin, Esq.
Christine & Brian Cooke
Dr. Roger Davis & Hayla Sluss
Richard Goguen
Kristie & Robert Heumann
Donna Horrigan
Michael Kagen & Family

Barbara & Kent Kochon
Mr. & Mrs. Robert Kozubal
Cathleen & Kevin Lane
Grace Lavallee
Marilyn & John Mohan
Joan & Ed Motuzas
Carol & James Mulcahy
Ron Pagnini, Jr. & Family
Mye & Joseph Pisano
Sylvia & David Price
Gail & Paul Rao
Ellen & Albert Rao
Karen & George Roberts

Charles Robinson
Dr. & Mrs. Charles Shelley
Mary Ann Soligon
Consuelo & John Staheli
Virginia & Andrej Starkis
Helen & Dave Stewart
Bernadette & Wayne Stockwell
Susan & Paul Surapine
Alice & John Tessicini
Linda & Richard Thorn
Rosemary Trettel & Family
Patti & Peter Vangsness
Marjory West

Symphonist Level

Julie Damigella
Mr. & Mrs. John Gannett
Charles Learoyd

Adell McWade
Nancy & Michael Marraffino
Elizabeth & James Norris
Beth Surapine

Leadership Aficionado

Miranda & Peter Black
Lynne Canavan **
Nan Foley **

Joyce & Daniel Gilmore
Anne & Serge Kornfeld**
Joy S. Perry
Sandra & Gerald Tosches

Nancy Wojcik
Patty Yee-Cimeno

Maestro's Circle

Alice & Bill Bissonette
Betsy & Dick Buma
Pam & Ernie Chaplin
Brooks Corl
Jean & Reno DeLuzio
Shirley Dennett
Debbie & Ross Dreyer
Alicia Franzosa
James Fritz & Teri Herel*
Michelle Gillies
Josephine Guenard
Lori & Chip Halt **
Etleva & Eldri Hima-Buli
Mr. & Mrs. Frank Hoek
Catherine Holmes

Avtar & Jagan Nath Singh Khalsa **
Joan Klaski
Jane & Evan Lattimore **
Bing Liang
Janice & Ed Lopes
Mark Love *in memory of*
Ronnie & Phillie Pagnini
Elsje Macaulay
Ronda & Bob Matson
Deborah Moore
Mr. & Mrs. Henry P. Morel **
Dan O'Neill
Jennene Pasquarosa
Carolyn & Michael Peterson
Dimitar Petkov **
Roger Prince

Abby Ribbans & Family
Jeremy Klein Ronkin *in memory of*
Harriet Bograd
Irene Rugoletti
Jane Schroeder
Penny & David Simon
Camilla Sowa
Kathy A. Stevens
Christine & Daniel Swtitz
Bruce Taylor & Cheryl Eidinger-Taylor
Valerie & Dana Tessicini
Dorothy & Scott Vine
Dr. & Mrs. Douglas Weeks **
Cynthia & Peter Young

People of Note

Ann & Ron Adams
Carol Bailey
Joyce Beard
Orla Berry
Senator & Mrs. Louis Bertonazzi
William Binette

Mr. & Mrs. Brian Bodio
Sherry & Robert Browning, *in memory of Vincent DeMetris*
Maria & Mark Calzaloia
Geraldine & Gerald Campbell
Carla Cataldo
Rose Chapin

Donna & Richard Coleman
Maureen Connole
Susan Cornelia
Gay & Lou D'Amaro
Patricia & Charles DiAntonio
Dr. & Mrs. Carl DiGregorio
Betsy & Ed Dinero

Continued next page

Patricia Downes
Bonnie & Scott Dryden
Mary & George Duhamel
Darlene & John Dulude
Mary Easter & Michael Sammarco
Charlotte Eckler
Kathleen Finneran
Jason Fitzgerald
Phyllis Foley
Susan & Philippe Fortin
Bette & Phil Gladstone
Josephine Guerino
Bonnie Haruch
Anne Hayes
Mary & Felix Janson
Janis & Eric Kom
Barbara Kirklauskas
Donna Kramer
Danice Larick
Richard Leblanc
Peter Light
Richard Manelis
Jean Mattila
Elaine & Ray McNanna
Anne & Barnes McNevin
Elizabeth & Wayne Mezziti
Fran & Len Morcone
Gary Moyer
Megan Mulligan
Mr. & Mrs. Ralph Nichols
Andrea Occhionero
Mary Oliva
Dawna & Nicky Oliva *in memory of*
Ronnie & Philomena Pagnini
Stella Owen **
Reva & Richard Parrella
Sue & Carol Pearl
Laura & John Peters, III
Nicholas Pilla
Brenda & Peter Pleshaw
Dr. & Mrs. Michael Popik
Sheila & Brian Pryhoda
Catherine Reeve

Patty & David Samson
Jeanne & Robert Sampson
Mr. & Mrs. Robert Sanchez
Lisa & Mike Sherman
Nancy & Howard Staples
Cheryl & Paul Stewardson
Pieter Struyk *
Mary Sullivan
Carol Surapine
Barbara Swift
Carol Ann Thompson
Doreen Trottier & Brian Arena
Richard Ulrich
Concepta Vernon
Michael Volkert & Margaret Leroux
Patricia & Chris Ward
Sharon Whalen
Sandra White
James Williams
George Wilverding
Susan Wolfe
Judy & Dan Yasi
Andrew Zimmerman

Members

Connie Bilgor
Judith Costello
Jeannette Cunniff
Janice Freniere
William Givens
Ryan Hanstad
Linda Kimball
Tina & Paul Mangan
Tom Mantegani
Paul Matondi
Nancy & Brian Nichols
Christine Rogan
Danielle Sarkisian
Denise Simoneau
Frances Stone
Bonnie Thiesing
Walda Vasile

Donors

Nancy Ahrens
Syed Ali
Leslie Briggs
Ed Carter
Beth Chase
Susan Diomedes
Sandra Farrell
Rena Fairbanks
Dr. Ronald & Joy Ferrucci
Susan Freimuth
Marie Georgelis
Lori & Michael Graham
Josephine Guenard
Tasha & Stephen Halpert
Marcia & Leonard Izzo
Dean Jacobus
Vincent James
Mr. & Mrs. Robert Joyce
Beverly & William Kavanaugh
Laura Krovocheck
Dr. Art Laman
Janice & Charles Martino
Jean McClelland
Joe Michaels
Pam & Frank Needleman
Bernard Olender
Caleb Ricardi
David Siktberg
Anne Wasnewski
Sandra White
Russ Wiggin

** Denotes "In-Kind Donation"*

***Denotes "CHSO Musician"*

**Add YOUR name
to our list.
Donate to Claflin Hill!
Just click here.**

Claflin Hill Symphony Orchestra

Chair Endowments 2023-24

Claflin Hill wishes to extend their gratitude to the following generous benefactors . . .

The James D. Morey Memorial Principal Bassoon Chair

Gift of Mr. & Mrs. Wayne Stockwell

The Florence Della Chiesa Memorial Assistant Concertmaster Chair

Gift of The Honorable & Mrs. Francis Larkin

The Pasquale Cardillo Memorial Clarinet Chair

Gift of Mr. & Mrs. Warren Barnes

The Wade Barnes Memorial Flute Chair

Gift of Mr. & Mrs. Warren Barnes

The Stanley W. Aronson Memorial Principal Flute Chair

Gift of Mr. & Mrs. Warren Barnes

The Harmon Family Foundation Timpani Chair

Gift of the Harmon Foundation and The McNevin Family

The Steven J. Trettel Memorial Violin Chair

Gift of Rosemary Trettel & Family

The Christopher A. Hoppe Memorial Principal Clarinet Chair

Gift of Debrah & Michael Hoppe & Family

The Edilio "Slim" Pagnini Memorial Violin Chair

Gift of Ron Pagnini, Jr. & Family

The Karen Earhart Memorial Horn Chair

Gift of Professor & Mrs. Charles Shelley

The Lavallee-Ruggiero Memorial Violin Chair

Gift of Grace Lavallee

The Pat & Larry Jeffery Memorial Violin Chair

Gift of Avtar Kaur & JaganNath Singh Khalsa

The E. Jacqueline Wild Memorial Principal Trumpet Chair

Gift of Rebecca Wild-Wesley and Thomas Wesley

The Ida M. Tessicini-Arthur F. Coelho Memorial Trumpet Chair

Gift of Alice and John Tessicini

The Jane Holl Memorial Principal Cello Chair

Gift of Tim Holl

The Anne "Nanci" Goguen Memorial Percussion Chair

Gift of Richard Goguen

The Claflin Hill Youth Symphonies Chair

Gift of Christine & Brian Cooke

The Bayiates Violin Chair

Gift of Joanne & Edward Bayiates

The Burrill Family Violin Chair

Gift of Elsie & W. Greg Burrill

The Blanchette Family Clarinet Chair

Gift of Donna & Joseph Blanchette

The Clarice Daniels Southwick Memorial Violin Chair

Gift of Justine Brewer

The Zabela-Eddins Family Horn Chair

Gift of Geri & Steve Eddins

The Mohan Family Viola Chair

Gift of Marilyn & John Mohan

The Austin & Linda Staheli Memorial Violin Chair

Gift of Consuelo, John and Vivian Staheli

The Cathleen Lane Cello Chair

Gift of Cathleen & Kevin Lane

The Rowe-Starkis Family Violin Chair
Gift of Virginia and Andrej Starkis

The Mulcahy Family Piccolo Chair
Gift of Carol & James Mulcahy

The Carole Hirsch Memorial Oboe Chair
Gift of Kristie & Robert Heumann

The Adelia Maresca Memorial Clarinet/Saxophone Chair
Gift of Joseph Pisano, Jr.

The George West Memorial Trumpet Chair
Gift of Marjory West

The Janet Hargraves MacLaren Memorial Viola Chair
Gift of Gail & Paul Rao

The Albert E. Rao Memorial Viola Chair
Gift of Gail & Paul Rao

The Jacqueline Blais Rao Memorial Viola Chair
Gift of Ellen & Albert Rao

The Edward & Ruth Horrigan Memorial Violin Chair
Gift of Donna Horrigan

The Ellen "Ginny" Larock Memorial Cello Chair
Gift of Norman Schneider

The Iyawata Barbara Schneider Memorial Cello Chair
Gift of Norman Schneider

The Judith Mushnick Memorial Piano Soloist Chair
Gift of Carol & Jeffrey Mushnick & Medway Oil & Propane

The Daly-Soligon Memorial Cello Chair
Gift of Mary Ann Soligon

The Ashley M. Roberts Bass Chair
Gift of Karen & George Roberts

The Alice Hoppe and Nila Surgi Teacher Chair
Gift of Debrah & Michael Hoppe & Family

The Surapine Family Violin Chair
Gift of Shanti Montgomery

The CHSO Jazz Piano Chair
Gift of Stephen Chaplin, Esq.

The Carol Szymanski Memorial Keyboard Chair
Gift of Sue Ellen and Robert Szymanski

The Greta Magenis Memorial Viola Chair
Gift of Linda & Richard Thorn

The Davis Family Cello Chair
Gift of Dr. Roger Davis & Hayla Sluss

The Margaret Kochon Memorial Oboe Chair
Gift of Barbara & Kent Kochon

The Barbara Robinson Memorial Cello Chair
Gift of Charles Robinson

The Sophie Holt Violin Chair
Gift of Patti & Peter Vangsness

The Dr. Herbert Paul Kagen Memorial Tuba Chair
Gift of The Kagen Family

The Vincent Motuzas Memorial Violin Chair
Gift of Joan & Ed Motuzas

In Support of the CHSO
Sylvia & David Price

The Deborah Levy Memorial Principal Viola Chair
Anonymous Gift

Clafin Hill Business Membership Benefits

Each level of support and privileges extends for one year. Membership is renewable annually.

Choice of Orchestra Chair sponsorship is subject to availability.

Your company name will be recognized throughout the year in our program book.

Basic Membership (\$35)

Subscription to "Sharing Notes," The Clafin Hill Music Performance Foundation's annual Newsletter including Calendar of Events, Special Notices, and articles.

"Companies of Note" (\$36 - \$199)

The above plus a **Clafin Hill framed certificate** acknowledging your philanthropic contribution. Display it at your place of business.

Maestro's Circle (\$200-499)

The above plus 2 tickets to a symphony concert of your choice AND sponsor a Clafin Hill e-mail broadcast, our weekly virtual update on concert events.

Symphonist (\$500-999)

All of the above plus 2 tickets (4 total) to the symphony concert or your choice AND the opportunity to sponsor an issue of Sharing Notes, our quarterly newsletter mailed to over 2,000 friends and associates.

Soloist (\$1,000-2,499)

All of the above plus 2 more tickets (6 total) to a Clafin Hill Symphony concert, and acknowledgement of a partial sponsor of a Family Symphony concert.

Virtuoso (\$2,500-4,999)

All of the above plus be recognized as a partial sponsor of a Clafin Hill concert. AND 4 more tickets (10 total) to a Clafin Hill Symphony concert. Call for details.

Impresario (\$5,000-9,999)

All of the above, plus your company named as a shared sponsor of a Clafin Hill symphony concert. 10 additional tickets (20 total) to share with friends, colleagues and employees. Call for details.

Luminary (\$10,000 and above)

All of the above plus your name as a 'Symphony Concert Sponsor,' and special acknowledgement in all flyers and advertising, along with the opportunity to arrange a chamber concert at your private function AND 30 additional tickets (50 total) to a Clafin Hill Symphony concert. Call for details.

Special Endowment Gift

Please consider the gift of a Special Endowment, which would allow the Clafin Hill Music Performance Foundation to continue its monumental growth and secure a healthy future for Live Music to thrive and flourish in our community for generations.

Clafin Hill Business Partners Sponsorships 2023-24

Shop local and please tell them "Clafin Hill recommended their business."

Join this list. Call 508-478-5924 or e-mail psurapine@clafinhill.org

Luminary (\$10,000 and above)

Homefield Credit Union
Medway Oil & Propane Company

Impresario (\$5,000 – 9,999)
CSR Financial Services, LCC
Milford Federal Bank
Unibank

Virtuoso (\$2,500 – 4,999)
Brigham & Women's Hospital
Central One Federal Credit Union
Falcetti Pianos of Natick *
Gallo Moving & Storage
Virginia Larkin, Realtor
Liscombe & Parrella, P.C.*
Nitto AVECIA, Inc.
Ray's Automotive
MyFM *

Soloists (\$1,000 – 2,499)

Benjamin Moore Paints
Bright Insurance Agency
Charles River Bank
The Edwards Memorial Funeral Home
Hillview Equipment
Koopman Lumber
Milford Nissan
Milford Power
Milford Rotary Club
Phipps Insurance Agency
Richardson Financial Services, Inc.
David Stewart Painting
Southwick's Zoo
Wolf Law Office LLC

Maestro's Circle (\$200 – 364)
Greater Milford Eye Associates
Guerriere & Halnon, Inc.
Oliva's Market
Restaurant 45

Companies of Note (\$100 – 199)

Area Glass
Bob's Marine Service
Continental Auto Sales
Custom Alarm Service
Spallone & Son
Signs Plus
The Embroidery Bar

Symphonists (\$500 – 999)

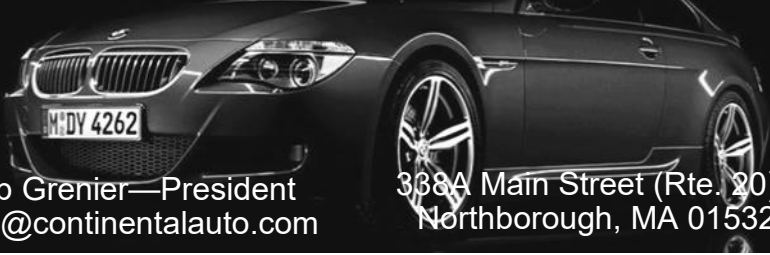
Sorrento Milford*
Consigli Ruggerio Funeral Home
Franks Appliances
Optica of Natick

*In kind donation

Leadership Aficianado (\$365 – 499)

Auto Go
Marshall's Jewelers
Milford Package Store
Motuzas Automotive, Inc.

Continental Auto Sales Inc.
Phone: 508.393.3210 Fax: 508.393.3776



Rob Grenier—President
rob@continentalauto.com

338A Main Street (Rte. 20)
Northborough, MA 01532



WOLF LAW OFFICE LLC
REAL ESTATE, WILLS,
TRUSTS, AND PROBATE

DONNA PALLOTTA WOLF, ESQ.
Wolf Law Office, LLC
54 Hopedale Street, Ste 4
Hopedale, MA 01747
Phone: 508-473-9800
Fax: 508-473-9801
Email: dpwolf@wolflaw.com
www.wolflaw.com

PROVIDING SERVICES IN REAL ESTATE AND ESTATES

Dimitar Krastev

*String Instruments and Bows
Restoration ~ Repairs and Sales*

By Appointments only:
73 Florence Street, Hudson, MA 01749 * (857) 269-5777 *
dskrastev@hotmail.com



Bank **Different.** Bank **Unique.**

UNIBANK

is a proud sponsor of



The Claflin Hill
Symphony Orchestra

Passionate performances. Masterful musicians.

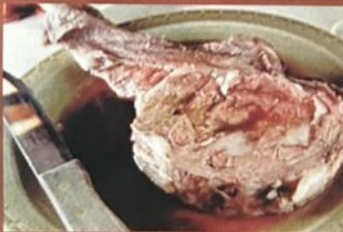
Milford Branch
91 Prospect Street
Milford, MA 01757
508.478.5666

www.unibank.com
Connecting all offices:
1.800.578.4270
Member FDIC

A Claflin Hill Business Partner

New England Steak and Seafood

RT. 16, MENDON, MA



Rt. 16, Mendon, MA • 508.478.0871

www.nesteakandseafood.com

[newenglandsteakandseafood](https://www.facebook.com/newenglandsteakandseafood)

Donate to Claflin Hill!
Just click here.

DANIELS FARMSTEAD



*Rich in History.
Gather, Celebrate, Learn.*
FOUNDATION, INC.



DANIELS FARMSTEAD 2023 FARMERS MARKET EVERY SUNDAY JULY 2 TO OCT 1
286 Mendon Street, Blackstone, MA WWW.DANIELSFARMSTEAD.ORG

Thank you to many community sponsors and donors including:



Southwick's Zoo



Galliford's

A Claflin Hill Business Partner

Tokyo Steakhouse

We're back!
Same great menu. New promotions.
Call for more options.



**Reservation not required.
Function room available.**

**121 Depot Street, Milford
508.478.7788**



Together, anything is possible.

CSR Financial proudly supports the Claflin Hill Symphony Orchestra



Peter Cardoza, CFP®, AIF®
President
CSR Financial Services, LLC
508.839.1040
pcardoza@csrfinancial.com
www.csrfinancial.com
2 Grafton Common
Grafton, MA 01519

Securities and advisory services offered through Commonwealth Financial Network®, Member FINRA/SIPC, a Registered Investment Adviser. Fixed insurance products and services are separate from and not offered through Commonwealth Financial Network®.

A Claflin Hill Business Partner



**SUPPORTS OUR
LOCAL ARTS!**

**VISIT US ONLINE AT
KOOPMANLUMBER.COM**

A Claflin Hill Business Partner



**Mass
Cultural
Council**

This program is supported in part by grants from the **Mendon, Mansfield, Grafton, Holliston, Northbridge, Medway, Hopedale, and Milford Cultural Councils**, local agencies which are supported by the Massachusetts Cultural Council, a state agency.

LISCOMBE & PARRELLA, P. C.

CERTIFIED PUBLIC ACCOUNTANTS
and BUSINESS ADVISORS

127A MAIN STREET
MEDWAY, MA 02053
(508) 520-2728
FAX (508) 520-6748

A Clafin Hill Business Partner

Largest CGMP Oligo Manufacturer in the world

Industry leader in a fast growing market

Maintain work/life balance with flexible schedules and competitive benefits

Supplies pharmaceutical ingredients to top Biotech and Pharmaceutical companies in the world

Locations in Massachusetts, Ohio, and California

20+ YEARS OF INNOVATION

Personal and Professional development opportunities

Learn more at www.avecia.com

Nitto AVECIA

A Clafin Hill Business Partner



Tel: 508-473-7920

Fax: 508-634-1289

OLIVA'S

MARKET, CATERING

& GOURMET GIFTS

83-85 East Main St. Milford, MA 01757
www.olivasmarket.com

*Serving Milford for 61 years
In memory of Babe Oliva*

A Claflin Hill Business Partner

Richardson
Financial Services, Inc.

165 Village Street, Medway, MA 02053
p: (508) 533-2335 | f: (508) 533-7666 | rfsria.com

Securities offered through J.W. Cole Financial, Inc. (JWC) Member
FINRA/SIPC. Advisory services offered through Richardson
Financial Services and JWC are unaffiliated entities.

A Claflin Hill Business Partner

CALL US TODAY!
508-473-9190



VISIT
Georgejroberts.com

GEORGE J. ROBERTS

CERTIFIED PUBLIC ACCOUNTANTS

TAX SERVICES

- Individual
- Corporate
- Partnership
- Trusts and Estates
- Advisory
- Projections

FINANCIAL SERVICES

- Audits
- Reviews
- Compilations
- Outsourced CFO Services
- Non-Profit Services

208 Main Street, Suite 105
Milford, MA. 01757

89 Main Street, Suite 109
Medway MA.02053

A Clafin Hill Business Partner

Spallone & Son

Menswear * Tailoring

Joe * Rosalia * Velia
Sartoria Professionale

90 Main St., Milford, MA 01757

508-473-4920

jspallone@yahoo.com



Rose's Corner
A Boutique Within A Store

90 Main Street
Milford, MA 01757
508.473.4920
rosaliesmorrison@yahoo.com

We are proud to support
The Claflin Hill
Symphony Orchestra



Party & Equipment Rentals

www.495rental.com 508-473-5022

189 Medway Rd. (Rt. 109) Milford, MA 01757

Donate to Claflin Hill!
Just click here.

Claflin Hill Foundation Support 2023-24

*Claflin Hill is proud to acknowledge grants
from the following Charitable Foundations
in support of this 2023-24 Season –*

**The Hopedale Foundation
The Harmon Family Foundation
The Foundation for MetroWest
The United Way of Worcester**

Custom Alarm Service, Inc.

More Than Just An Alarm Company

Security & Fire Alarms for your home or business
Access Control / Video Surveillance Systems
Systems are Installed and Serviced

Email: security@customalarm.com

23 Providence St., Mendon, MA 01756

508-473-1028



A.C. BARNES McNEVIN, III
SENIOR VICE PRESIDENT

175 Federal Street
Boston, MA 02110

TEL 617.896.3500 DIRECT 617.896.3530
FAX 617.227.5505
1.800.556.8600

A Clafin Hill Business Partner

Milford Package Store

270 Main Street, Milford

508-473-0838

milfordpackage.com

We have something special for your special occasions.



SignsPlus

**Fast,
Professional
Service!**

89 South Main Street, Milford, MA

Phone **508-478-5077**
Fax **508-634-9825**

www.signs-plus.net

**Donations in Memory of Raymond T. Surapine
The Raymond T. Surapine Memorial Conductor's Baton**

Sherry & Bob Browning
Bette & Phil Gladstone
Richard Goguen
Irene Rugoletti
Teresa & Richard Sergi
Norman Schneider
Carol Surapine
Beth Surapine
Carol Ann Thompson
Nancy Wojick

Teri Herel, Principal Clarinet
Warren Barnes, Clarinet
Todd Brunel, Bass Clarinet
Nan Foley, Principal Horn
Paige McGrath, Horn
Erich Ledebuhr, Principal Trumpet
Jeffrey Hoefler, Trumpet
Kevin Donegan, Trumpet
Douglas Weeks, Trombone
Henry Morel, Percussion
Evan Lattimore, Percussion
Pieter Struyk, Percussion
Stella Owen, Keyboard
Angel Valchinov, Concertmaster

Anne Kornfeld, Violin
Susan Holcomb, Violin
Sally Martin, Violin
Lynne Canavan, Violin
Margaritka Valchinov, Principal
Second Violin
Diane Plouffe, Violin
Gordon Strick, Violin
Jagan Nath Singh Khalsa, Violin
Dimitar Petkov, Principal Viola
David Schreiber, Viola
Johann Soultz, Principal Cello
*Denotes CHSO Musician

CHSO Musicians:
Amy Carroll, Flute & Piccolo
Lori Halt, Flute

Bob Choquette
Certified Technician

Bob's Marine Service

508-473-2523
bobsmarineservice750@gmail.com

19 Uxbridge Rd (Route 16)
Mendon Ma 01756

RESTAURANT 45
45 Milford Street
Medway, MA 02053

**OPEN 7 DAYS A WEEK
LUNCH & DINNER**

phone: 508-533-8171
text: 508-321-7049
management@45restaurant.com
www.45restaurant.com

DINING • LOUNGE • PATIO • FUNCTIONS • CATERING • TAKE OUT

A Clafin Hill Business Partner



508 473 0353

7 Charles River Street Milford, MA 01757

Owned and operated by the Lowinski-Loh family for 33 years!



autogorepair@yahoo.com

www.autogoservice.com



PosterMyWall.com



MILFORD NISSAN

320 East Main Street (Route 16)
Milford, MA 01752 - (508) 422-8000

www.MilfordNissan.com

Milford Nissan - Family Owned and Operated
Conveniently Located Minutes off Route 495 (Exit 19)
200+ New Nissan's In-Stock to Choose!!
100+ Pre-Owned Vehicles In-Stock Starting at Only \$5,995!!



Milford Nissan Price Promise
Honest • Guaranteed • No False Promises
That's the Milford Nissan Guarantee!!

A Clafin Hill Business Partner

GALLO

MOVING & STORAGE

When it's time
to move, make sure

*It's the
Right
Move.*

GALLO
MOVING & STORAGE



Instantly estimate your
move in

3 Easy Steps!

- 1** Visit [GalloMoving.com](https://www.gallomoving.com)
Click on
FREE DIY VIDEO SURVEY
- 2** Take videos of your home
- 3** Receive your estimate



Move with Confidence. Move with Trust. Move with Gallo.
508-422-4400 | [gallomoving.com](https://www.gallomoving.com)

A Claflin Hill Business Partner

Consigli  *Ruggerio*
Funeral Home, Inc.

***Proud sponsor
of
The Claflin Hill
Symphony
Orchestra***

46 Water St
Milford, MA, 01757
Phone: 508-473-0513
Toll Free: 800-675-0513
Fax: 508-634-3662

*Virginia Larkin
Realtor*



*“Our community is so fortunate to have such a
First Class Symphony Orchestra.
We are very grateful.”*

508-473-9300

508-935-8270

vlarkinrealtor@verizon.net

A Claflin Hill Business Partner